

Gauge	1/10
Manufacturing	Precision
Pile description	PP Tristar
Primary backing	Non-woven
Pile weight	615 gr/m ²
Number of tufts	157.480 /m ²
Secondary backing	Weaveback
Width	400 cm
Total weight	1550 gr/m ²
Total height	7,5 mm
Pile In/Out	In
Roll length	30 m
DOP	1087#660/C00/WI
Fire classification	Cfl-s1
Use classification	22
TOG rating	1,3

Available colours Weaveback | 400 cm 141 | 151 | 156 | 157 | 333 | 891 | 893 | 964 | 965 | 989 |

Colour legend	141	Black	151	Mouse	156	Dolphin
	157	Pebble	333	Pecan	891	Fjord
	893	Denim	964	Walnut	965	Beaver
	989	Truffle				



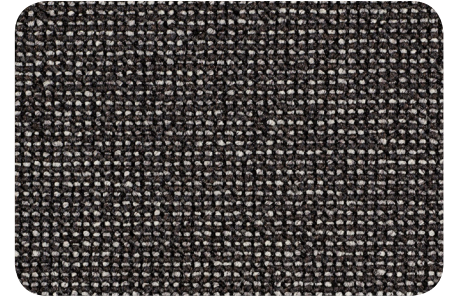
These details are approximate. Complete specification details and associated certificates together with tolerances applying to the above can be provided upon request. We reserve the right to modify technical specifications without prior notice. Due to method of manufacture perfect pattern and/or colour matching can not be guaranteed. In cut-pile carpeting, in rare cases, shading/pile reversal may occur without affecting its fitness for use. Shading/pile reversal can not be considered as a manufacturing or a material defect and will not affect the durability of the carpet.

BIG Floorcoverings nv Rijksweg 442 | 8710 Wielsbeke - Belgium | T +32 (0)56 67 42 11 | F +32 (0)56 67 48 40 | www.ideal-bintg.com

06.05.2020 | ISO N090N02/2/01-01-10



Beaulieu
International
Group



141 - 400 cm



151 - 400 cm



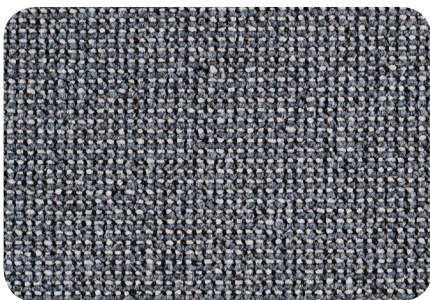
156 - 400 cm



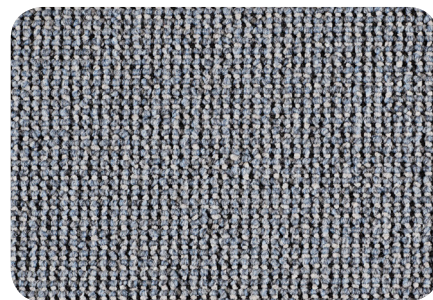
157 - 400 cm



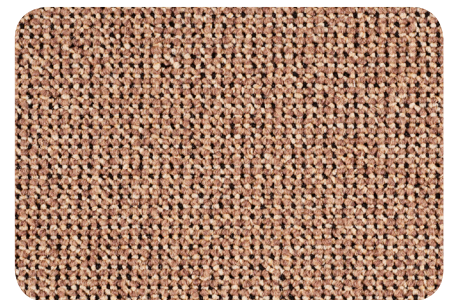
333 - 400 cm



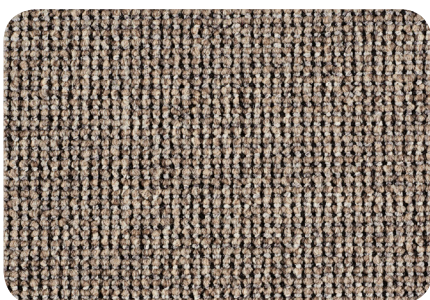
891 - 400 cm



893 - 400 cm



964 - 400 cm



965 - 400 cm



989 - 400 cm